



Parent Teacher Association

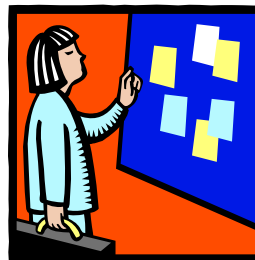
President's Message

Hello Parents, Staff and Students,

Welcome Back! I hope everyone is off to a wonderful start this school year as we enter the fall season. I am very excited to report the wonderful start up for the PTA this year. It was extremely helpful and nice that this year we were able to get our membership sign up form in the registration mail out. It created much needed publicity for the PTA and gave us a good start with our membership. Last year at the end we had 61 paid members reported to the state which was a HUGE success for this PTA. We received the Power of 11 recognition which meant we increased membership from the previous year by 11 or more members. Our start up this year is already at 45 paid members we are just within reach of matching or exceeding last years total. Let's aim to beat it! Anyone can join the PTA at any time during the school year. Membership forms are available in your school office or on the school website under the PTA tab and costs just \$6.00. Just fill out the form and place your dues and the form in a sealed envelope with PTA written on it in the school office.



Another success we already accomplished this year, is that we started off with a full PTA board. We have a President, Vice President, Secretary and Treasurer. If you don't know who they are please visit the PTA tab on the school website or reference your school calendar where the names and contact information is provided. Each of us will also make every effort to attend each PTA meeting so you can meet us there as well.



Each building was given a PTA bulletin board that will be displayed near the front office and will have PTA information posted on it. Please make sure you stop by and peek at what is going on with the PTA. If you are interested in keeping this board current and up to date please contact me and we'll work on it together. Minutes from the first PTA meeting that was held on September 13th are posted on the website, we had a nice turn out and it was decided that the PTA will sell T-Shirts for parents to purchase. This will be a first for our PTA and hopefully will be a huge success and will let staff know how involved parents want to be. Please be on the look out for when sales of the T-Shirts will start.

I feel this is a great beginning and see more opportunities for the PTA so please keep in contact with the PTA.

Mrs. Susan Fox

**Community Consolidated
School District 168**

Volume 2, Issue 1

October 2011

Wagoner School
1831 E. 215th Place
708-758-3322
Strassburg School
2002 E. 223rd
708-758-4754
Rickover Jr. High
22151 Torrence Ave.
708-758-1900

**Upcoming Dates to
Remember:**

**10-28 End of Grading
Period**

**10-29 Saturday
Workshop @ Rickover**

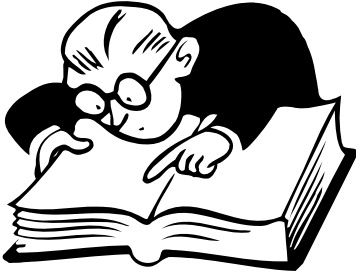
**Wk 10-31 Strassburg
Book Fair**

**11-3 & 11-4 Parent-
Teacher Conferences**

**11-6 Daylight Savings
Time Ends**

Did you know?

We will use this section to keep you, as a parent, informed of little tidbits, and/or concerns that are not only at school but in our village. To be of great help to our children we must know what is going on and work together. Please feel free to e-mail me your questions or tidbits of information to clydefamilia@aol.com so we can share.



What do you want to know?

Did you know.....

A PTA membership only costs \$6 and a few hours of your time. A portion of the \$6 dollar membership goes into our PTA fund account that we can use for student and teacher programs.

Being a PTA member can get you discounts with companies like Southwest Airlines, T-Mobile, Sharp Electronics, and now newly added, Office Max. Visit the Illinois PTA website and view more savings.

PTA will start selling T-Shirts for parents. Information will be sent out soon.

The PTA is helping WAGONER participate in the SunnyD Book Spree. This is a program where SunnyD will donate 20 free books to each classroom that collects and sends in 20 SunnyD UPC labels. Visit the district website to see the eligible product labels or ask your child's teacher. The UPC label is the barcode located on the back of SunnyD bottles 16 oz and larger and on the shrink-wrap covering of 6, 8, 12, and 24 packs. To make sure your labels count, make sure this part is sent in. Start sending your labels, this program ends November 18, 2011.

PTA Quick Membership Form
Just \$6.00 for each parent or \$10.00 for a family.

Name _____

Address _____

Phone# _____ Email _____

Child's Name _____ School _____

I can volunteer some time. My dues are enclosed.

I cannot volunteer any time, however, my dues are enclosed.

Please return this form and dues to any school office.