

Community  
Consolidated  
Schools  
District 168



# **SENATE BILL 100**

# **PUBLIC ACT 99-0456**

IASB

SOUTH COOK FALL DINNER

OCTOBER 26, 2016

DR. DONNA S. LEAK

Community  
Consolidated  
Schools  
District 168



# **SENATE BILL 100**

# **PUBLIC ACT 99-0456**

**IASB**

**SOUTH COOK FALL DINNER**

**OCTOBER 26, 2016**

**DR. DONNA S. LEAK**



## Research – National

Black students are not engaging in more serious infractions than their white peers that would warrant more extreme actions such as suspensions and expulsions. The discipline disparities likely occur because black students are more frequently disciplined for subjective offenses, such as class disrespect and defiance, while white students are more often disciplined for more overt behaviors, like vandalism.

*Skiba, "Race is not Neutral"; Skiba et al.. "The Color of Discipline: Sources of Racial and Gender Disproportionality in School Punishment," The Urban Review*



## Research – National

Black students are not engaging in more serious infractions than their white peers that would warrant more extreme actions such as suspensions and expulsions. The discipline disparities likely occur because black students are more frequently disciplined for subjective offenses, such as class disrespect and defiance, while white students are more often disciplined for more overt behaviors, like vandalism.

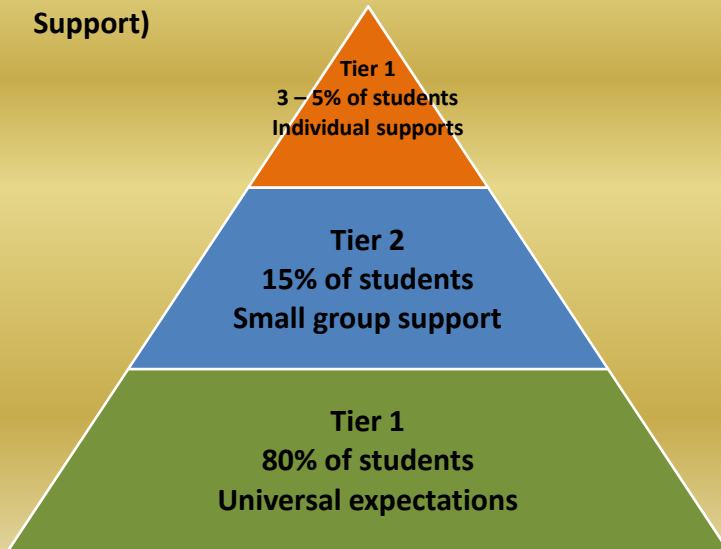
*Skiba, "Race is not Neutral"; Skiba et al.. "The Color of Discipline: Sources of Racial and Gender Disproportionality in School Punishment," The Urban Review*

Community  
Consolidated  
Schools  
District 168



**PRIOR TO PA 99-0456 (SB 100)**

**RtI – Response to Intervention (Academic and Behavior)/MTSS (Multi-Tiered Systems of Support)**

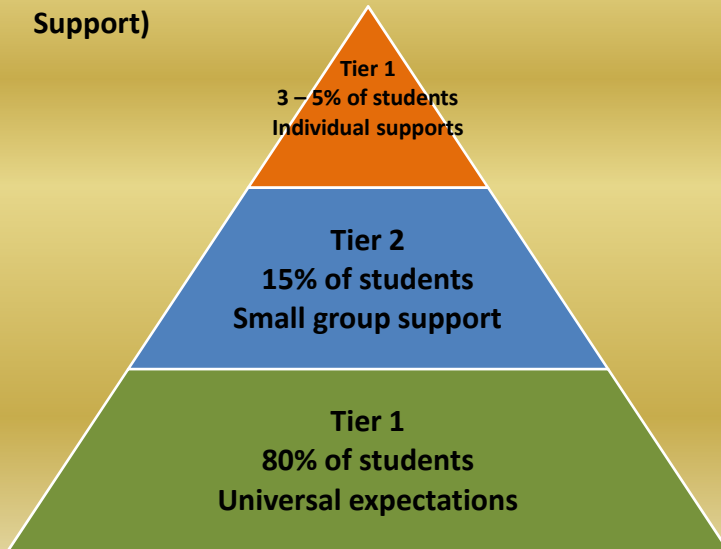


Community  
Consolidated  
Schools  
District 168



**PRIOR TO PA 99-0456 (SB 100)**

**RtI – Response to Intervention (Academic and Behavior)/MTSS (Multi-Tiered Systems of Support)**





## Public Act 99-0456

### *Minor Changes*

- *Parent-Teacher Advisory Committee (PTAC) must meet annually to review their discipline policies (previously such annual review was merely encouraged)*
- *School districts are encouraged to create a memorandum of understanding with law enforcement agencies to define their role in the school setting*
- *School officials “shall limit the use of expulsions and suspensions to the greatest extent practical.”*



## Public Act 99-0456

### *Minor Changes*

- *Parent-Teacher Advisory Committee (PTAC) must meet annually to review their discipline policies (previously such annual review was merely encouraged)*
- *School districts are encouraged to create a memorandum of understanding with law enforcement agencies to define their role in the school setting*
- *School officials “shall limit the use of expulsions and suspensions to the greatest extent practical.”*



Community  
Consolidated  
Schools  
District 168



~~Zero  
Tolerance  
Policies~~

**PROHIBITED**

Community  
Consolidated  
Schools  
District 168



~~Zero  
Tolerance  
Policies~~

**PROHIBITED**



## **Category II**

- **4 Days**
  - ***Only if appropriate and available behavioral and disciplinary interventions have been exhausted AND***
  - ***The student's continued presence at school would pose:***
    - ***“a threat to the safety of other students, staff or the school community OR***
    - ***substantially disrupts the operations of the school”***



## **Category II**

- **4 Days**
  - ***Only if appropriate and available behavioral and disciplinary interventions have been exhausted AND***
  - ***The student's continued presence at school would pose:***
    - ***“a threat to the safety of other students, staff or the school community OR***
    - ***substantially disrupts the operations of the school”***

Community  
Consolidated  
Schools  
District 168



## IMPACT ON SCHOOL BOARDS

- Parent Teacher Advisory Committee (2:150 Committees)
  - Required
  - Review of the Discipline Section of Student Handbook
- Policy Updates to (PRESS Updates sent Spring 2016)
  - 7.190 Student behavior
  - 7:200 Suspension Procedures
  - 7:210 Expulsion
  - 7:220 Bus Conduct
  - 7:240 Conduct Code for Participants in extracurricular Activities

Community  
Consolidated  
Schools  
District 168



## **IMPACT ON SCHOOL BOARDS**

- **Parent Teacher Advisory Committee (2:150 Committees)**
  - Required
  - Review of the Discipline Section of Student Handbook
- **Policy Updates to (PRESS Updates sent Spring 2016)**
  - 7.190 Student behavior
  - 7:200 Suspension Procedures
  - 7:210 Expulsion
  - 7:220 Bus Conduct
  - 7:240 Conduct Code for Participants in extracurricular Activities

# Behavioral and Disciplinary Interventions Spectrum

Exclusionary  
Discipline – Out of  
School Suspension,  
Expulsion, Alt.  
Placement

In-School Discipline –  
Saturday School, In-  
School Suspension, etc.

Restorative Justice Measures  
– Peer mediation, Peer Jury,  
etc.

Tiered Interventions – Behavior  
Contracts, CI/CO, etc.

Partnering with Parents – Phone Calls, E-mail,  
Meeting, etc.

Classroom interventions - Classroom behavior Systems,  
Teacher Conference, etc.

Schoolwide interventions – Schoolwide Behavior System,  
Assemblies, Team Building, etc.

# Behavioral and Disciplinary Interventions Spectrum

Exclusionary  
Discipline – Out of  
School Suspension,  
Expulsion, Alt.  
Placement

In-School Discipline –  
Saturday School, In-  
School Suspension, etc.

Restorative Justice Measures  
– Peer mediation, Peer Jury,  
etc.

Tiered Interventions – Behavior  
Contracts, CI/CO, etc.

Partnering with Parents – Phone Calls, E-mail,  
Meeting, etc.

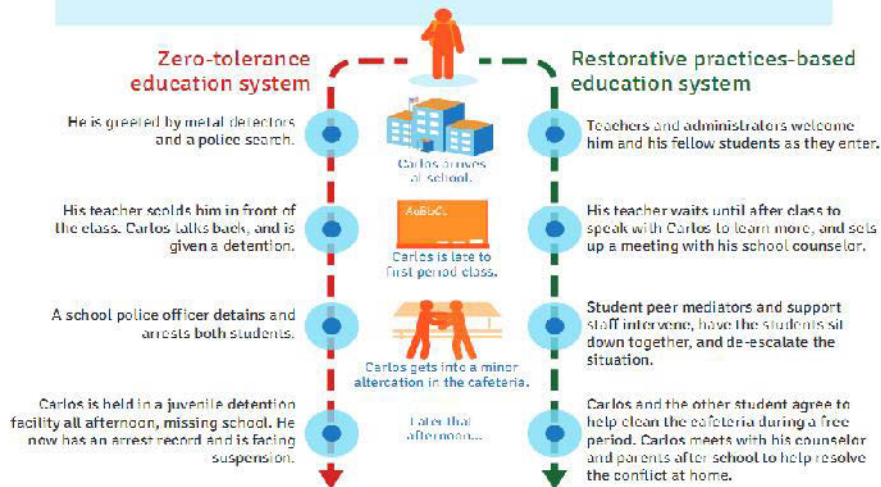
Classroom interventions - Classroom behavior Systems,  
Teacher Conference, etc.

Schoolwide interventions – Schoolwide Behavior System,  
Assemblies, Team Building, etc.



## A Tale of Two Schools

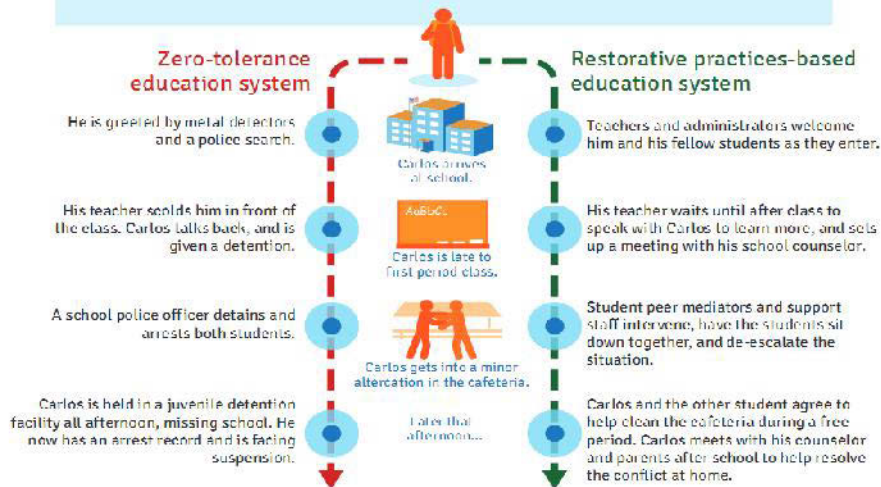
Carlos had a heated argument with his parents before leaving for school, so he's running late.  
Let's see the difference that restorative policies and practices can make.



*Restorative Practices: Fostering Healthy Relationships & Promoting Positive School Discipline in Schools A Guide for Educators*

## A Tale of Two Schools

Carlos had a heated argument with his parents before leaving for school, so he's running late. Let's see the difference that restorative policies and practices can make.



*Restorative Practices: Fostering Healthy Relationships & Promoting Positive School Discipline in Schools A Guide for Educators*

Community  
Consolidated  
Schools  
District 168



# QUESTIONS?

PowerPoint will be  
available on  
[www.d168.org](http://www.d168.org)

Thank you!