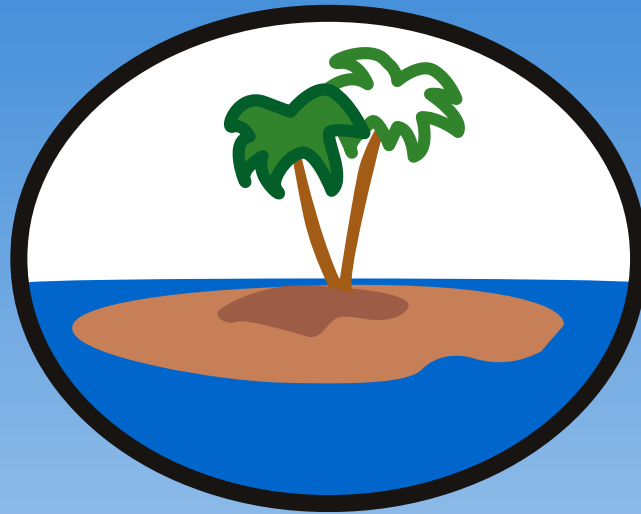


STUDY ISLAND



ISAT PREPARATION



The Study Island ISAT program is designed specifically to help students master the content specified in the Illinois Learning Standards. Study Island's focus on the Illinois Learning Standards enables students to improve their performance in all skill areas tested on the ISAT (grades 3 through 8), which leads to improved test scores. Study Island also offers a 2nd grade pre-ISAT preparation program.

The user-friendly interface enables students to move through the program step-by-step. Each section (5th grade math, for example) has a pretest and a post test, along with topics that cover each of the skills tested on the ISAT. Topics consist of questions, answers, explanations, and lessons that address the specific skills contained in the Illinois Learning Standards.



WEB-BASED

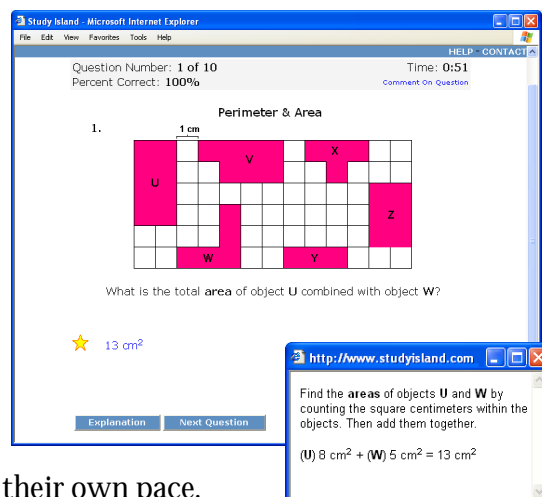
Study Island requires no software installation and is accessible simultaneously to all students. Students can use it at school, home, or anywhere with an Internet connection.

QUESTIONS SIMILAR TO ISAT

The Study Island program includes questions that are similar in style to the actual ISAT. This helps provide teachers and administrators with an accurate benchmark of student progress.

IMMEDIATE FEEDBACK AND BUILT-IN REMEDIATION

Upon answering a question incorrectly, students are shown the correct answer along with an explanation for the correct response. When students need extra help on a topic, Study Island can automatically prompt them to work on remedial-level material for that topic.



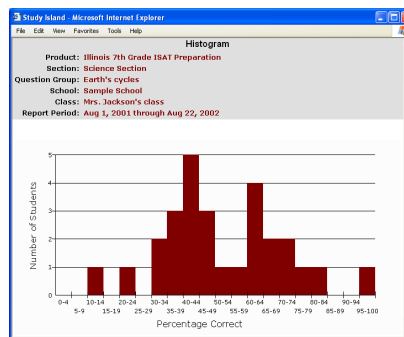
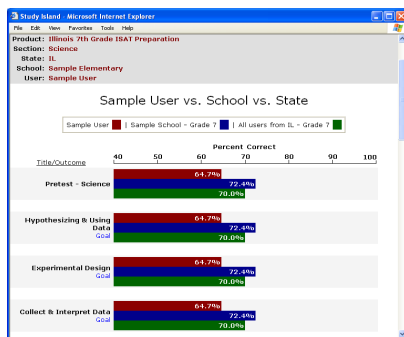
SELF-PACED OR TEACHER GUIDED

Study Island is designed to allow students to learn at their own pace.

The amount of time a student spends on a skill depends on that student's performance. The custom teacher page gives teachers the option of guiding students through the program by communicating their expectations to students and creating class assignments.

REAL-TIME REPORTING

Study Island records statistics for each user session in a real-time report card. These stats measure progress and streamline the learning process. Teachers and principals have access to a private page where they can view usage statistics and results for each student or for a class. Real-time reports (including graphs) help teachers measure progress and identify deficiencies as they relate to the Illinois Learning Standards.

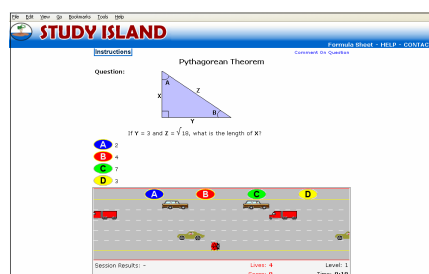


DYNAMIC CONTENT

Not only are there several thousand practice items in the Study Island program, but each item is constantly changing. The answers to the multiple choice questions are continuously changing position, and the numbers for the math questions are randomly chosen. This causes the students to learn the concepts, not just memorize the answers.

STANDARD TEST MODE OR FUN INTERACTIVE GAMES

Study Island enables students to choose their style of learning. Students can work using a standard test format or several interactive games. As with many of Study Island's features, your school has the option to restrict access to the games. Printable worksheets are also available and are ideal for practicing extended response questions.



ONLINE ISAT PREPARATION

www.StudyIsland.com/IL ~ 800-419-3191 ~ sales@StudyIsland.com

What teachers have to say about Study Island...

"As the chair for the English department, I would highly recommend Study Island. I don't know how you guys did it, but you have hit the jackpot with these lessons, exercises, games, and tests. Thank you for a fabulous resource."

"I have been using computers and software for over 20+ years, and I truly feel that yours is the best I have seen."

"We are thrilled with the results we have seen from this program. Our teachers and students love it!"

"I have been so impressed with Study Island. There are many wonderful software and Internet products out there, but Study Island is by far the one that is the most aligned with our state's required curriculum."

"At our last meeting with the superintendent of our public schools and other board personnel, we were asked to what we attributed our successful scores... and we emphatically said Study Island!"

What the Students say...

"I love Study Island, and every school needs it."

"Study Island helped me gain more confidence."

"This is a really great way to learn. Thanks a lot!"

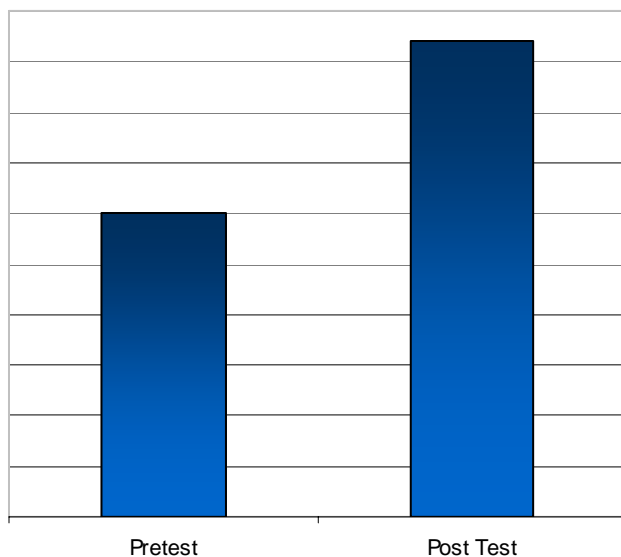
"I love Study Island. I feel that this program will improve my scores very much. Thank you very much. My teachers and I appreciate all you have done for the struggling students."

According to our recent survey, Study Island is...

Helpful - 98% of teachers feel that Study Island is helping their students.

Easy to Use - 91% of teachers and 89% of students say that the students can use Study Island without any additional help.

Enjoyable - 95% of teachers say their students enjoy using Study Island.



Study Island users average a 12.2% increase in score from pretest to post test.

Included With Your Subscription:

- Unlimited free imports of student roster data. Do it yourself, or let us do it for you!
- Unlimited school and home usage for students and teachers. We encourage you to use SI as much as possible from wherever you can access the Internet!
- Unlimited free tech support via toll-free phone, live chat, and email. We rank in the top 1% for customer service in our industry!

Please let us show you why Study Island is loved by millions of teachers, students, administrators, and parents across the country. Contact us today to set up a free demonstration at your school.



STUDY ISLAND